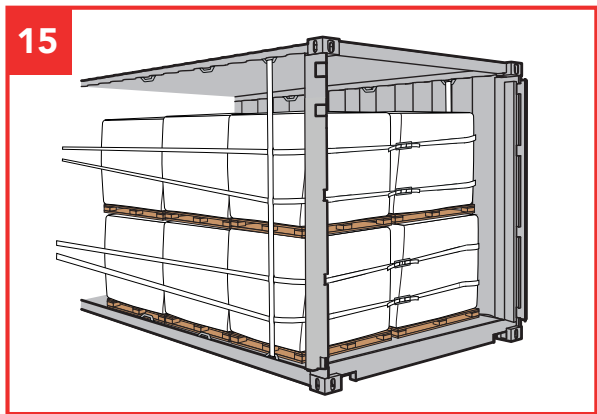
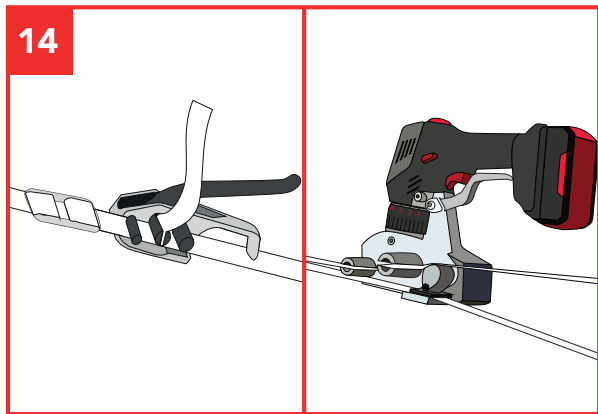
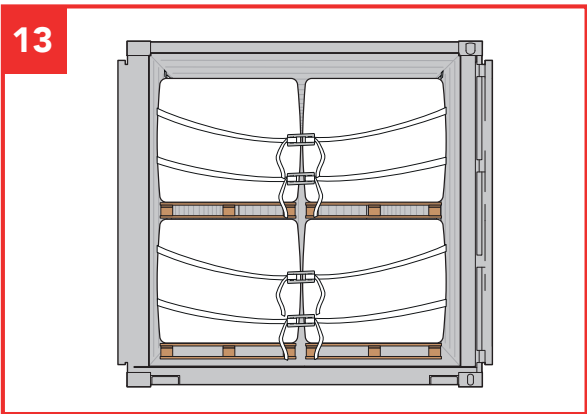
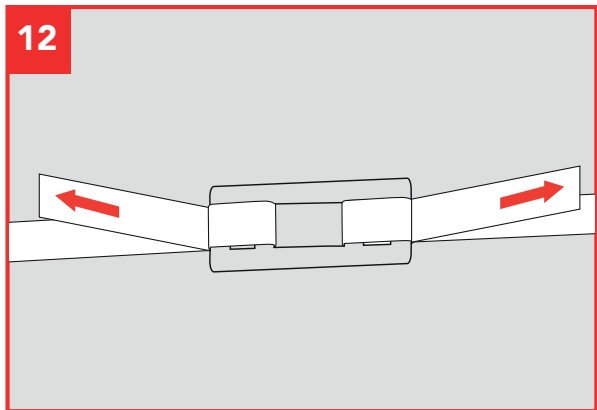
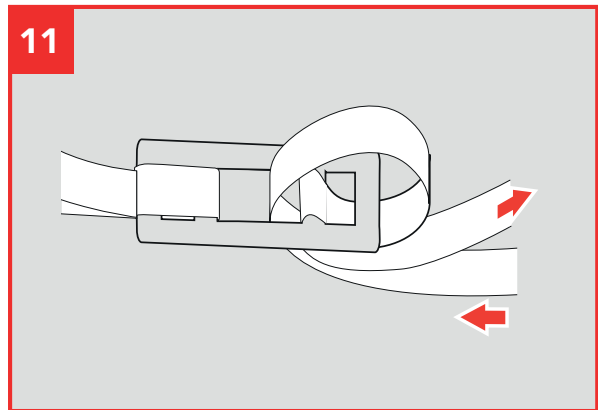
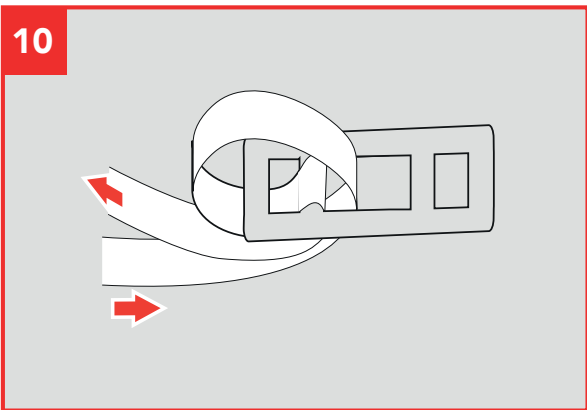
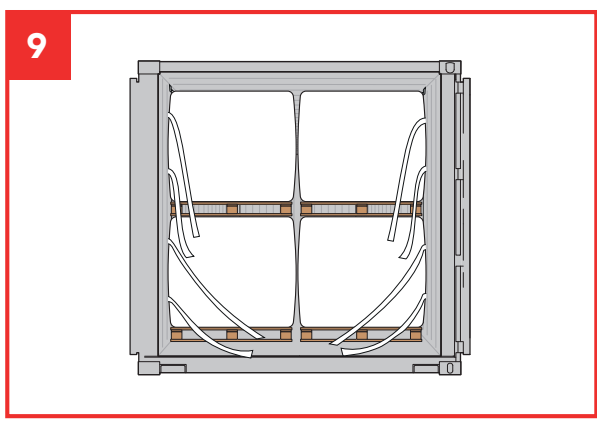
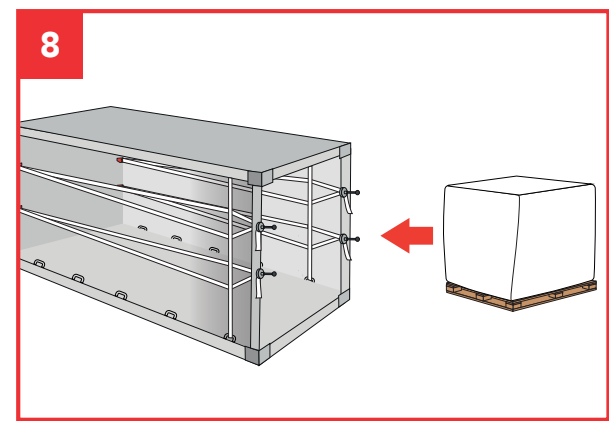
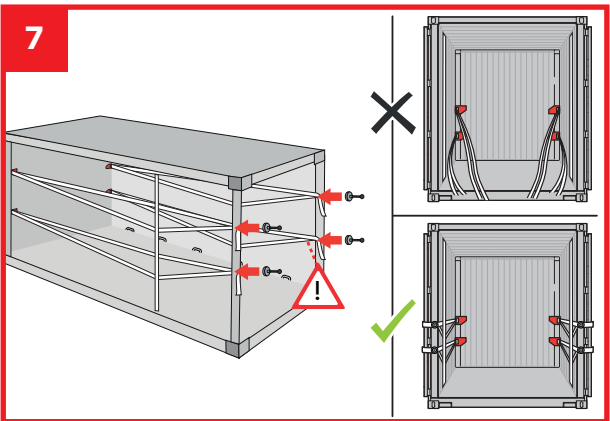
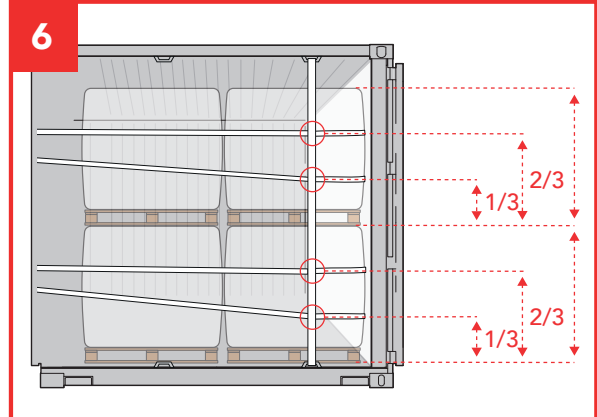
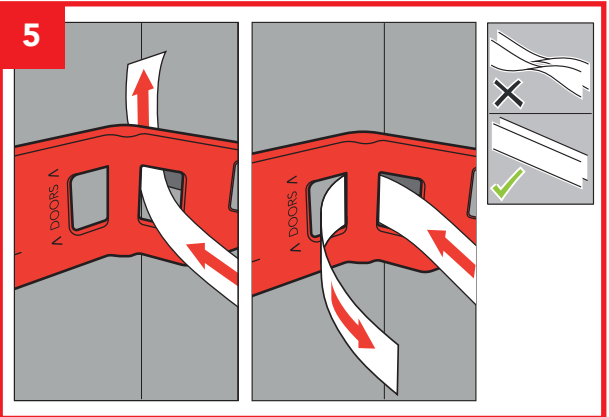
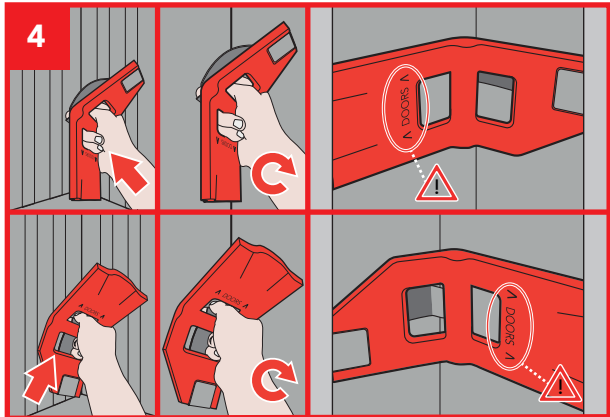
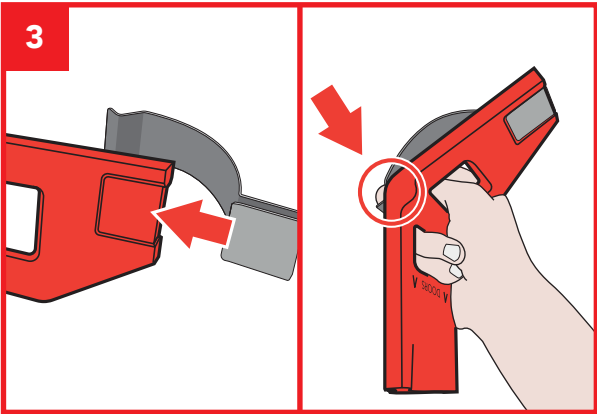
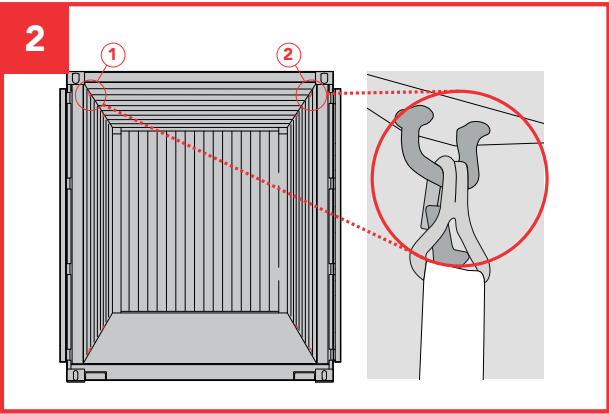
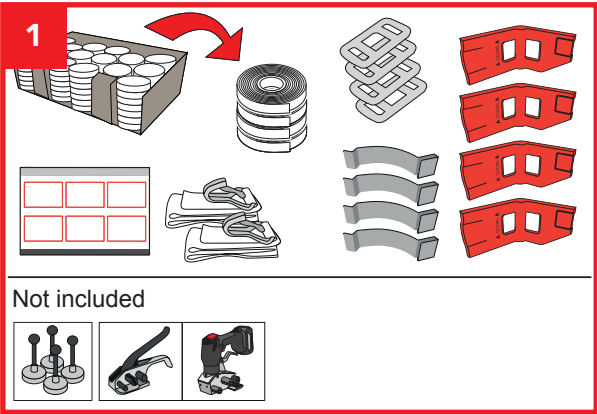


Cordstrap CornerLash® 105.4 20FT – Small Big Bags (Non-Compressible)



Keeping the world's cargo safe

cordstrap

This container is secured with Cordstrap CornerLash®

Cargo Details

Cargo Weight:



Transport mode	Max Cargo Weight*
Road doors to front	19.800 kg / 43,560 lb
Road doors to back	CONTAINER PAYLOAD
Rail no shunting	CONTAINER PAYLOAD
Sea unrestricted	27.600 kg / 60,720 lb

*Calculations according CTU-code (2014), friction coefficient $\mu = 0,45$
average lashing angles.
Certified by Maritern (Certificate CS2016002)

Conform CTU Code
EN 12195-1:2010

