

# TRIKARSA GROUP

## COMPANY PROFILE BUSINESS

Registered as a General Trading Company, was established in Batam - Indonesia (2016).

The company business was formatted through the partnership of well experienced individuals.

Cargo Securing Solution

**CATALOGUE**  
**UPDATE INFO**



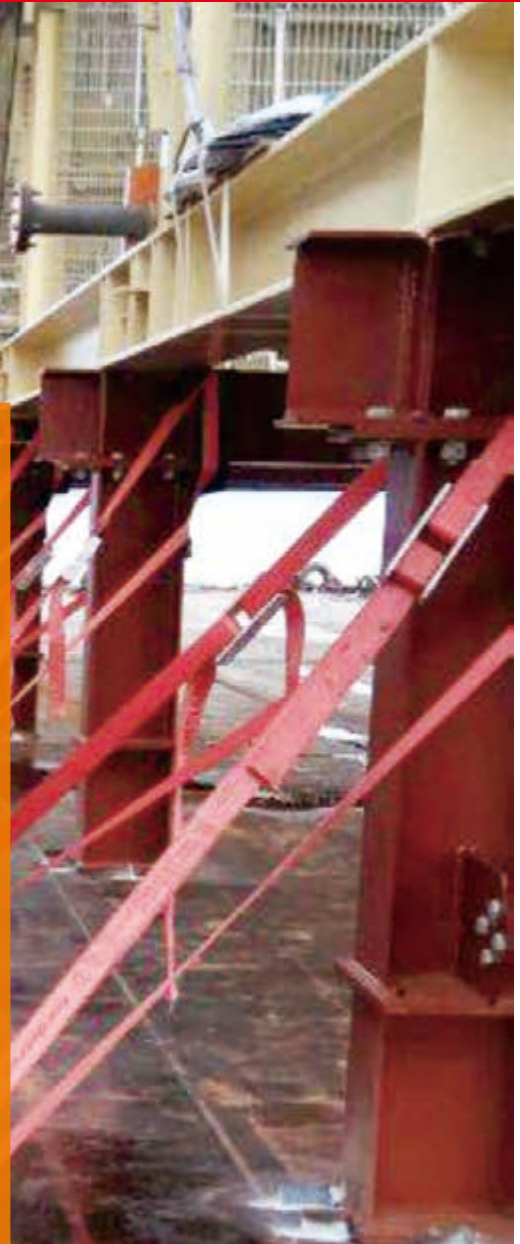
**SCAN ME**

# Welcome!

## To Our Business

The company provides certified material for strapping and lashing materials, and other products for cargo securing and sea fastening purpose. In addition, the company also provide documentation services such as drawing and image (photography), moving image (video graph), aerial documentation (Drone), and post-production (editing).

Galang Usaha Mandiri has a sister company namely PT. Triarsa Jasatama, a Freight Forwarding company, engaged in sea freight and vessel charter, custom brokerage, shipping agent, open yard and indoor storage, loading and unloading, project mobilization, and inland transportation.



### Mision :

- To exceed customer expectations by prioritizing the quality of the product, effectiveness, efficiency in many aspects;
- To introduce our products and services in different establishment with passion and pride
- To give excellent trading services to achieve customer satisfaction

### Mision :

- To become one of the most reliable distributor where our client completely rely on us in all aspects of business





# PT. GALANG USAHA MANDIRI



Cargo protection for  
Machinery and  
Equipment Manufacturers



Safe cargo securing for the  
Chemical Industry



Safe, efficient cargo security  
for the  
Steel and Metal Industry



## ***cordstrap***

Keeping The World's Cargo Safe

## Cordstrap Composite Strapping



## Cordstrap Composite Strapping

Cordstrap's GL certified composite polyester strapping provides a high quality, reliable and strong solution to securing products of all shapes and sizes for transportation, however heavy, fragile or expensive they may be.

A combination of application expertise and market leading cargo security knowledge allows Cordstrap's experts to demonstrate how best to apply our large range of strapping solutions to your specific cargo securing requirements in the most timely and reliable manner.

### Features



High securing strength - up to 2600 daN / 5850 lbf



Extremely high strap and buckle joint efficiency



Comprehensive range of manual, battery operated and pneumatic tensioners available



Wide range of accessories to guarantee the best solution for every application

**cordstrap**  
Keeping The World's Cargo Safe



All Cordstrap Composite Strapping solutions are witness tested BV Germanischer Lloyd



## Product Specification : Cordstrap Composite Strapping & Buckle

## Cordstrap Composite Strapping

### Cordstrap Corded Polyester Strapping - CC50

- Width : 16 mm
- System Strength : 730 daN / 1.641 lbf
- Length : 850 meter / Roll

### Cordstrap Corded Polyester Strapping - CC60

- Width : 19 mm
- System Strength : 810 daN / 1.821 lbf
- Length : 600 meter / Roll

### Cordstrap Corded Polyester Strapping - CC85

- Width : 25 mm
- System Strength : 1.469 daN / 3.302 lbf
- Length : 500 meter / Roll

### Cordstrap Corded Polyester Strapping - CC105

- Width : 32 mm
- System Strength : 2.568 daN / 5.773 lbf
- Length : 230 meter / Roll

### Cordstrap Galvanized Steel Buckle - CB5

- Width : 16 mm
- Package : 1.000 pcs / Box

### Cordstrap Galvanized Steel Buckle - CB6

- Width : 19 mm
- Package : 500 pcs / Box

### Cordstrap Galvanized Steel Buckle - CB8

- Width : 25 mm
- Package : 250 pcs / Box

### Cordstrap Galvanized Steel Buckle - CB10

- Width : 32 mm
- Package : 125 pcs / Box



CC50-CB5



CC60-CB6

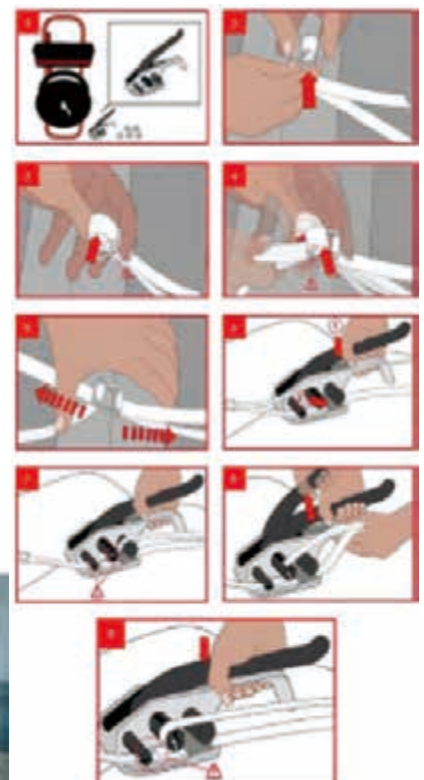


CC85-CB8



CC105-CB10

## Cordstrap Strapping Tools and Accessories

Tensioner  
CT-25Tensioner  
CT-40Tensioner  
CBT-35Trolley Dispenser  
CPD-200KD

## Cordstrap Woven Lashing



## Cordstrap Lashing

Cordstrap lashing, known as Cordlash®, is the most effective way to secure cargo for international shipping wherever it may be, on any transport unit - containers, flat racks, railcars or ships.

Cordstrap's polyester one-way lashings have many advantages over conventional securing products such as steel straps, chains or wood blocking and bracing. Cordlash® eliminates incidents and damage to your cargo.

Strong, reliable and safe, Cordlash® complies fully with the latest rules and regulations. Ensuring that your responsibilities as a shipper are met and that your cargo passes through controls in the logistics chain quickly and without any hold up. Arriving at its destination safely and in perfect condition.



### Optimal Security

Made of high tenacity polyester yarn to ensure maximum strength, Cordlash® has many advantages over conventional products. It ensures that your cargo arrives at its destination in the same condition as when dispatched.



### Safe

Cordstrap's woven lashing solutions are non-abrasive and safe for both operator and cargo. Optimized lashing and buckle combinations maintain securing function for dynamic and static loads during the most severe transport conditions.



### Fully Certified

The quality and performance of our lashing is undisputed as it complies with the latest national and global regulations. It is GL certified, AAR approved and CTU Code compliant.



### Expert Support

Cordstrap Lashing is fully supported by training and implementation from local cargo securing experts enabling efficiency, standardization and consistency in how your cargo is secured.





## Cordstrap Woven Lashing

**Product Specification :  
Cordstrap Woven Lashing & Buckle****Cordstrap Woven 105 - CW105**

- Width : 32 mm // 1,1/4"
- System Strength : 3.025 daN / 6.801 lbf
- Length : 250 meter / Roll

**Cordstrap Woven 200 - CW200**

- Width : 40 mm // 1,5/8"
- System Strength : 9.060 daN / 20.367 lbf
- Length : 200 meter / Roll

**Cordstrap Woven 750 - CW750**

- Width : 50 mm // 2"
- System Strength : 13.204 daN / 29.685 lbf
- Length : 150 meter / Roll

**Cordstrap Woven 1500 - CW1500**

- Width : 60 mm // 2,3/8"
- System Strength : 23.889 daN / 53.705 lbf
- Length : 100 meter / Roll

**Cordstrap High Dynamic Buckle - HDB10N**

- Width : 32 mm // 1,1/4"
- Package : 50 pcs / Box

**Cordstrap High Dynamic Buckle - HDB12N**

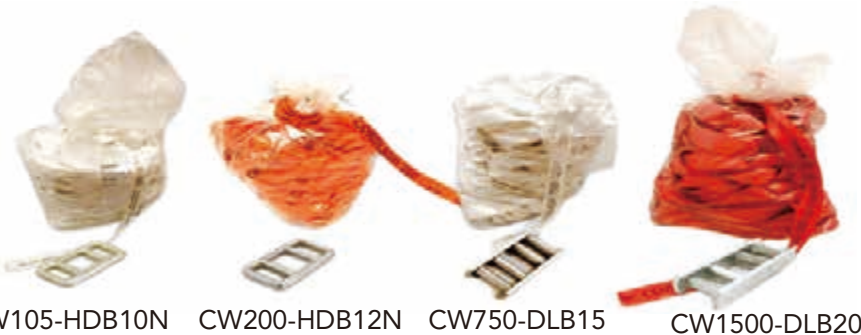
- Width : 40 mm // 1,5/8"
- Package : 30 pcs / Box

**Cordstrap Dynablock 15 - DLB15**

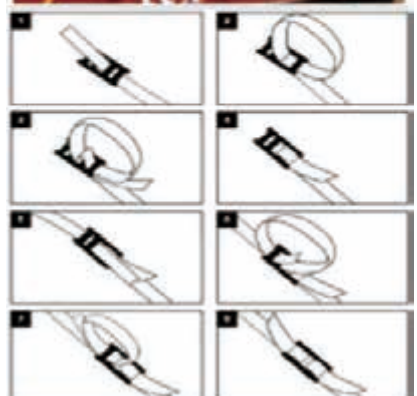
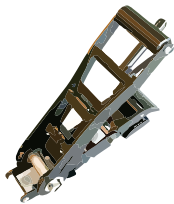
- Width : 50 mm // 2"
- Package : 20 pcs / Box

**Cordstrap Dynablock 20 - DLB20**

- Width : 60 mm // 2,3/8"
- Package : 6 pcs / Box



CW105-HDB10N CW200-HDB12N CW750-DLB15 CW1500-DLB20

**Cordlash Tools and Accessories**Tensioner  
CT-40Tensioner  
CRT-50Tensioner  
CRT-60Tensioner  
CBT-35

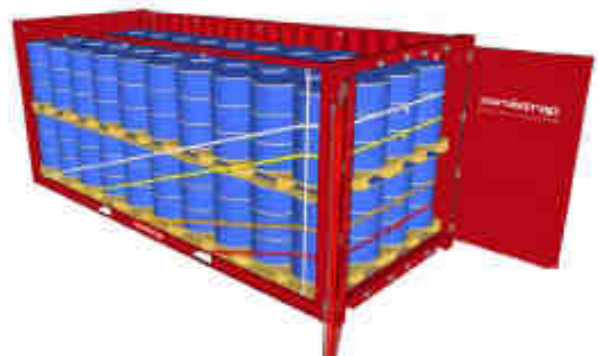
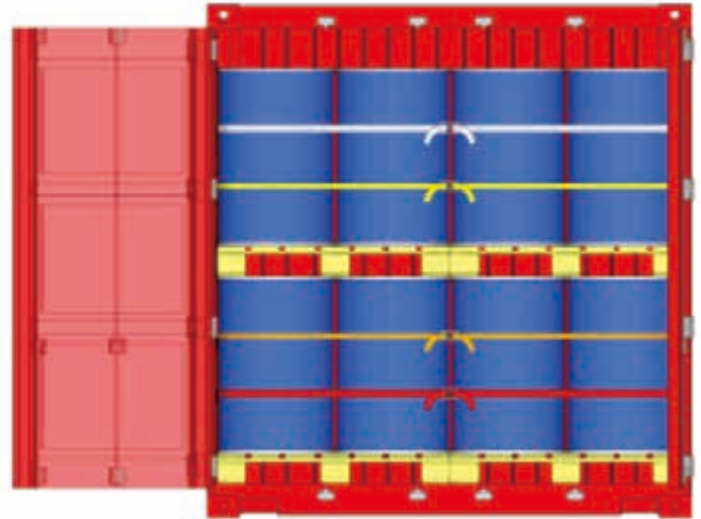
Secure light and medium weight Container loads

## Cordstrap Anchorlash

Anchorlash® is the versatile solution for light to medium loads. Using the strongest existing anchor points within the container, Anchorlash® can adapt to your specific cargo, whether that's carton boxes, plastic drums, big bags or other soft packaging, providing cargo protection on any modality or route.

Designed to be quick and easy to apply consistently, with color-coded lashing to easily show the order that the pre-cut lashing should be applied and optional snap hooks to further speed up application. It's delivered in packaging that contains everything you need to secure one container minimising preparation time, so one person can secure a container in minutes helping to reduce load times and costs.

At Cordstrap, we are committed to supporting and driving safety in our industry. The Anchorlash® solution provides CTU Code Compliant cargo protection, supporting your responsibilities when shipping nationally or internationally. We know that each customer has specific requirements, and will therefore work closely with you to understand your business needs, and your cargo variables - type, weight, transport mode, route, so that we can calculate and advise on the best securing solution for you.



Cordstrap Anchorlash® protects your cargo, your people and your brand



### Safe & Secure

High quality lashing solutions secure cargo to prevent movement within the container, protecting both the cargo and ensuring the safety of everyone involved in the supply chain.



### Time & Cost Efficient

Designed to be easy and quick to apply consistently, saving time and cost during loading and application.



### Compliant

All Cordstrap lashing solutions are CTU Code compliant and have independent witness verification.



## Secure light and medium weight Container loads

### Cordstrap Container Solutions: AnchorLash® Range

	Standard	SH (Snap hook)
AnchorLash® 105.3	3 pairs of colour coded horizontal lashings with a stitched loop at the end to attach to the container anchor point, and 3 buckles	3 pairs of colour coded horizontal lashings with a snap hook to attach to the container anchor point, and 3 buckles
AnchorLash® 105.4	4 pairs of colour coded horizontal lashings with a stitched loop at the end to attach to the container anchor point, and 4 buckles	4 pairs of colour coded horizontal lashings with a snap hook at the end to attach to the container anchor point, and 4 buckles

Anchorlash® is CTU Code Compliant, certified by MariTerm AB, Eurosafe and DNV-GL witnessed. Your Cordstrap Cargo Securing Expert can advise you on the best solution for your specific requirements. Securing values vary based on cargo type, transport mode and friction factor. For full details of the solution performance, please refer to the commercial specification sheet and MariTerm certificate.

### Tailor the solution for your specific cargo type

Edge protection and hang straps keep lashing in an optimal position and protect packaging

Elastic woven lashing for flexible retaining



EdgeBoards (Soft Packaging)



FlexBoards (Drums and)



IBC Protector



Hang Strap

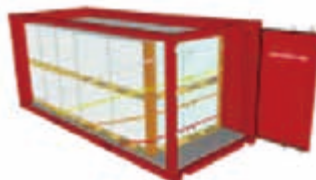


Retainer Buckle (Compressible Bulk)

### AnchorLash® can be used in a reefer container with a Reefer Lashing Point



Reefer Lashing Point



### Use the recommended tools to enable easy, fast and consistent application



Battery Tensioner CBT35



Manual Tensioner CT40 (2)



Container Magnets

These are the recommended tensioners. Other tensioners may also be suitable.

### IBC Friction Test

Prevent IBC's from Sliding out the container



The container inclined to 35°

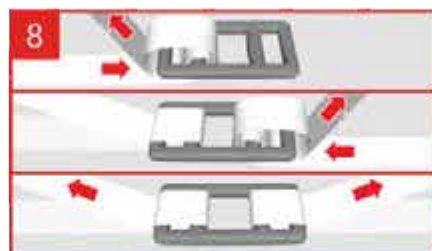


The container inclined to 43°



## Secure light and medium weight Container loads

## Cordstrap AnchorLash® 105.4 20FT &amp; 40FT – Instructions – Small Soft BigBags

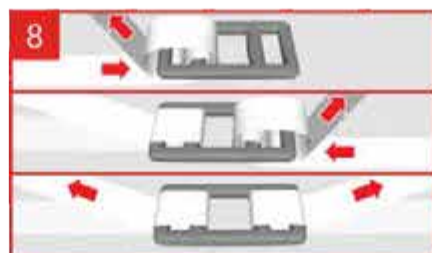
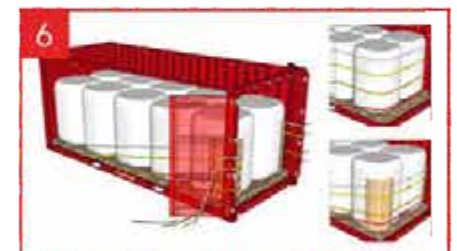


Use of Flexboards is optional



## Secure light and medium weight Container loads

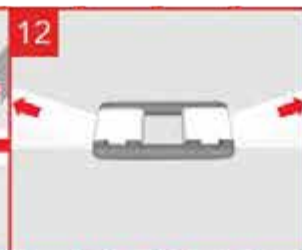
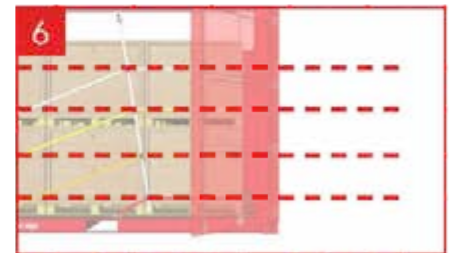
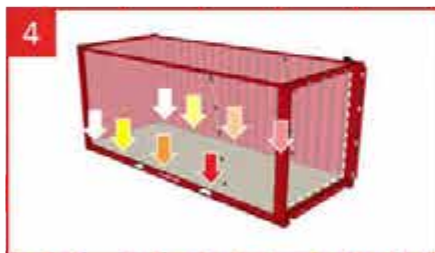
## Cordstrap AnchorLash® 105.4 20FT &amp; 40FT – Instructions – Large Soft BigBags



Use of Flexboards is optional

## Secure light and medium weight Container loads

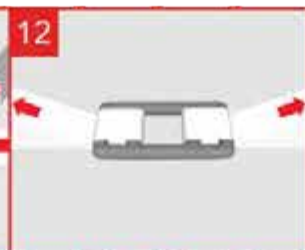
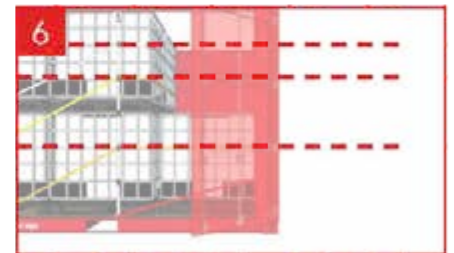
## Cordstrap AnchorLash® 105.4 20FT &amp; 40FT – Instructions – Standard Crate





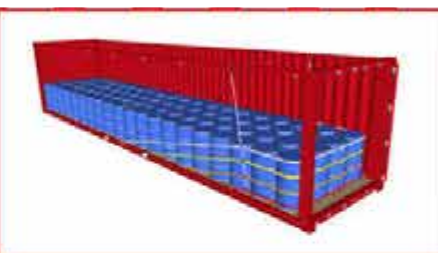
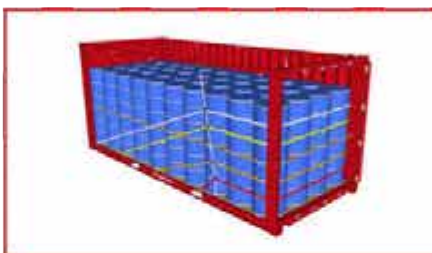
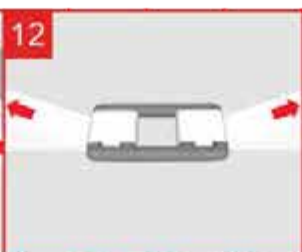
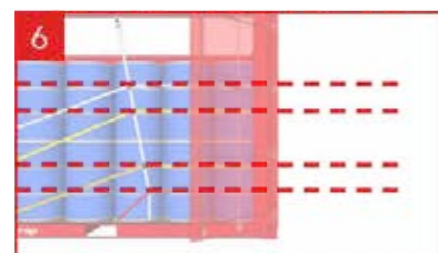
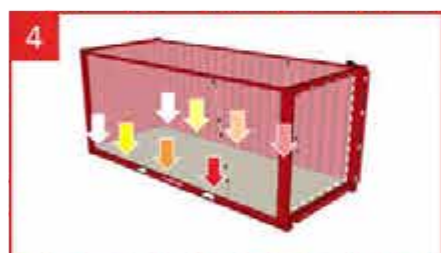
## Secure light and medium weight Container loads

## Cordstrap AnchorLash® 105.4 20FT &amp; 40FT – Instructions – IBC's



## Secure light and medium weight Container loads

## Cordstrap AnchorLash® 105.4 20FT &amp; 40FT – Instructions – Steel Drums



Application for palletized steel drums is 100% the same



# Cordstrap Applications

Cordstrap's cargo applications are engineered to deliver the maximum protection for goods during shipping. Cordstrap application specialists work with each customer to design a tailor-made solution that matches their specific shipping challenges. A customized approach that delivers ultimate peace of mind.

*"Maximum protection ...  
maximum peace of mind "*



## Palletizing and Bundling

This combination of solutions can transform cargo, even if of irregular shape, into transportable units that can be shipped worldwide without damage.

Cordstrap's Palletizing, Unitizing and Bundling Solutions are:

- Easy, fast and safe to apply
- Protective
- Strong
- Reliable
- Lightweight

## Railcar Securing

Forces in excess of 4G can easily be generated during shunting. Cordstrap's dynamic cargo securing solutions provide a high degree of shock absorbency, critical in this event.



Cordstrap's Containerization Solution are :

- Time Efficient;
- Protective;
- Light weight;
- Portable;
- Certified and approved by organizations including Germanischer Lloyd and AAR;
- Inclusive of onsite staff training.

Cordstrap's Flat Rack Securing Solution are :

- Easy, fast, and safe to apply;
- Highly shock-absorbent;
- Tension retentive;
- Certified and approved by Germanischer Lloyd (GL);
- Inclusive of onsite staff training.

## Containerization

Cordstrap make containerization as easy, fast and cost effective as possible. The composite lashing solutions and dunnage bags that Cordstrap have developed, are specifically designed to prevent the movement of cargo



## Flat Rack Securing

Valuable cargo can be exposed to extreme external influences on flat racks. Cordstrap's dynamic cargo securing solutions protect against these and ensure cargo arrives at its destination without damage.



## Ship Securing

Cordstrap's heavy-duty polyester lashings facilitate dynamic cargo securing solutions that will not damage cargo during the voyage and are easily applied in confined spaces such as a ship's hull.



Cordstrap's Railcar Securing Solution are :

- Easy, fast, and safe to apply;
- Highly shock absorbent;
- Tension retentive;
- Certified and approved by organizations including Germanischer Lloyd and AAR;
- Inclusive of onsite staff training.

Cordstrap's Ship Securing Solution are :

- Easy, fast, and safe to apply;
- Highly shock absorbent;
- Protective;
- Light weight;
- Portable;
- Re-tension able;
- Certified and approved by organizations including Germanischer Lloyd and IMO.

## Our Company Client



PT. ENTEK SEPARINDO ASIA



PT. CITRA TUBINDO - A Group of Vallourec



PT. HUNTING ENERGY ASIA



PT. PROFAB INDONESIA



PT. FMC SANTANA PETROLEUM EQUIPMENT INDONESIA



PT. BETON PERKASA WIJAKSANA



PT. SYSPEX KEMASINDO



PT. NX SHOJI INDONESIA

PT. BERDIRI MATAHARI LOGISTIK /  
HITACHI TRANSPORT SYSTEM INDONESIA

PT. OHGISHI INDONESIA



INTERPORT - Member of Indika Energy Group



PT. KHI - STEEL STRUCTURE







**Thank You  
for your business**

## **Contact Us.**

### **PT GALANG USAHA MANDIRI**

*General Trading Company & Cargo Securing Solution*

#### **Address**

Batam :  
Jl. Yos Sudarso, Komplek Sentosa  
Purnama Jaya, Blok B No. 1, Batu  
Ampar Batam

Jakarta :  
Perumahan Permata Puri Media  
Ruko Blok C2 No. 24, Kembangan  
Jakarta Barat

#### **Phone**

Tel. +62 778 458 048  
Fax +62 778 456 734  
Phone +62 811 7750 906 /  
+62 813 6529 5255 /  
+62 811 7770 126

#### **Email**

sales.btm@galangusaha.com  
sales@galangusaha.com

#### **Website**

[www.galangusaha.com](http://www.galangusaha.com)